

Closed System Intermittent Catheter

Instructions for Use

INTENDED USE

The TruCath® Closed System Intermittent Catheter is intended to drain urine from the bladder.

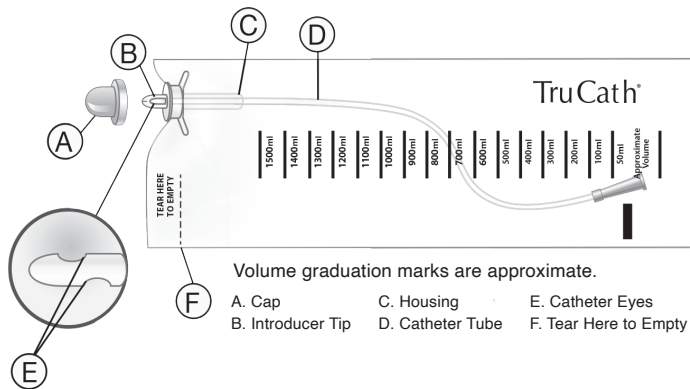
CONTRAINDICATIONS

None.

WARNINGS

- When removing the cap, if the introducer tip is also removed, urinary tract infection (UTI) risk could be heightened as the tip is designed to protect the catheter from potential pathogens.
- Any serious incident that occurs in relation to the device should be reported to the manufacturer.

CATHETER COMPONENTS



STEP-BY-STEP INSTRUCTIONS

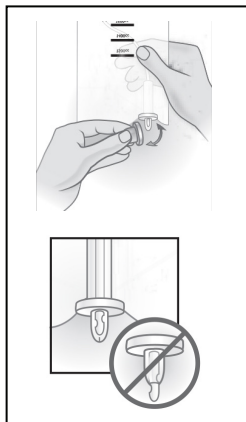
MALE INSTRUCTIONS

(see reverse for female instructions)

- Wash hands. Open the package and remove the contents. Put on gloves, and use an underpad, if necessary.

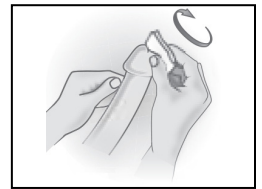


- Prepare the catheter: Remove the cap from the introducer tip. Ensure that the catheter tube is inside the introducer tip but not extended through the opening of the tip.

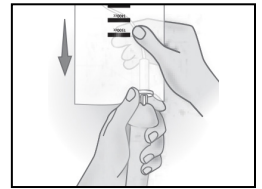


IMPORTANT: When removing the cap, gently pry the cap away from the introducer tip. Do not pull the cap in an upward motion to remove it from the introducer tip as this can cause the introducer tip to be removed from the bag. Ensure that the introducer tip is intact after cap removal and still attached to the bag. If you remove the introducer tip during cap removal, discard the entire product and get another. Do not attempt to insert the catheter without the introducer tip attached to the bag. Also, be careful not to touch the introducer tip with your fingers; doing so will compromise sterility.

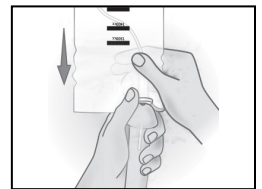
- Clean the urethral opening (meatus) and surrounding area.



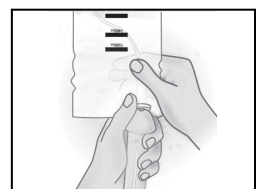
- Using the non-dominant hand, hold the penis just below the glans (head). With the dominant hand, insert the introducer tip and catheter into the meatal opening. Then hold the catheter securely in place with the non-dominant hand.



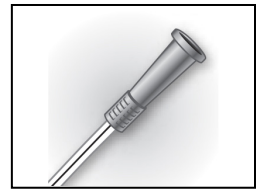
- Using the dominant hand, grasp the catheter tube through the bag an inch (1") below the housing and begin advancing the catheter into the urethra at 1" to 1.5" intervals.



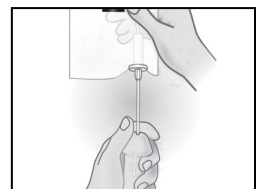
- Continue advancing until the catheter reaches the bladder and urine begins to flow. Allow the urine to flow until the bladder is empty or the bag is full. If using a coude tip catheter, see the note below; otherwise, move to step 7.



NOTE: Coudé Tip - A blue indicator line on the catheter tube and a raised line on the side of the colored funnel denotes the location of the curve of the tip. Check with your physician/healthcare provider. In most cases, the curve of the tip should be in an upward position during insertion to allow the catheter tube to pass beyond the prostate.



- When the urine drainage is complete, slowly and gently withdraw the introducer tip and the catheter from the urethra.



- To empty the bag, tear the bag open where it says, "TEAR HERE TO EMPTY." Tear downwards for best results. Pour the urine into the toilet.



- Dispose of the catheter, bag, and contents using normal, acceptable clinical practice.

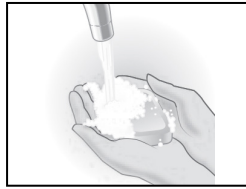


- Wash hands after completion.



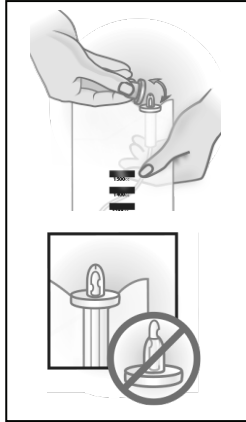
FEMALE INSTRUCTIONS

1. Wash hands. Open the package and remove the contents. Put on gloves, and use an underpad, if necessary.

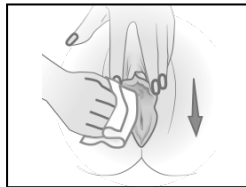


2. Prepare the catheter: Remove the cap from the introducer tip. Ensure that the catheter tube is inside the introducer tip but not extended through the opening of the tip.

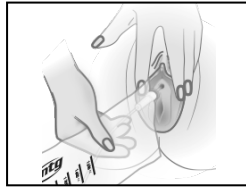
IMPORTANT: When removing the cap, gently pry the cap away from the introducer tip. Do not pull the cap in an upward motion to remove it from the introducer tip as this can cause the introducer tip to be removed from the bag. Ensure that the introducer tip is intact after cap removal and still attached to the bag. If you remove the introducer tip during cap removal, discard the entire product and get another. Do not attempt to insert the catheter without the introducer tip attached to the bag. Also, be careful not to touch the introducer tip with your fingers; doing so will compromise sterility.



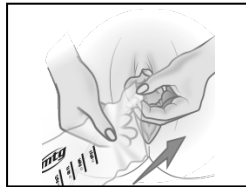
3. Clean the urethral opening (meatus) and the surrounding area.



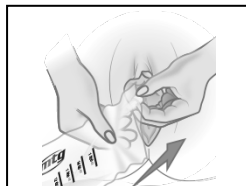
4. Using the non-dominant hand, hold the inner labia apart. With the dominant hand, insert the introducer tip and the catheter into the meatal opening. Then hold the catheter securely in place with the non-dominant hand.



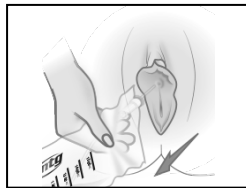
5. Using the dominant hand, grasp the catheter tube through the bag an inch (1") below the housing with the dominant hand and begin advancing the catheter into the urethra at 1" to 1.5" intervals.



6. Continue advancing until the catheter reaches the bladder and urine begins to flow. Allow the urine to flow until the bladder is empty or the bag is full.



7. When the urine drainage is complete, slowly and gently withdraw the introducer tip and the catheter from urethra.



8. To empty the bag, tear the bag open where it says, "TEAR HERE TO EMPTY." Tear downwards for best results. Pour the urine into the toilet.



9. Dispose of the catheter, bag, and contents using normal, acceptable clinical practice.

10. Wash hands after completion.



Symbols glossary and additional information available at trucath.com

Manufactured for:
 HR Pharmaceuticals, Inc.
 2600 Eastern Blvd., Suite 201
 York, PA 17402 USA
 800-985-9048
hrpharma.com

TruCath is a part of the **HR** family of brands.

HR and TruCath are registered trademarks of HR Pharmaceuticals, Inc.
 ©2023 HR Pharmaceuticals, Inc. All rights reserved.